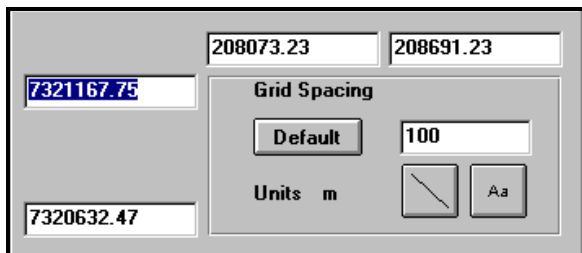
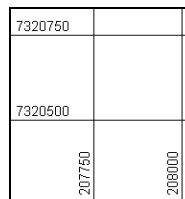


Display Tools for MapInfo Professional

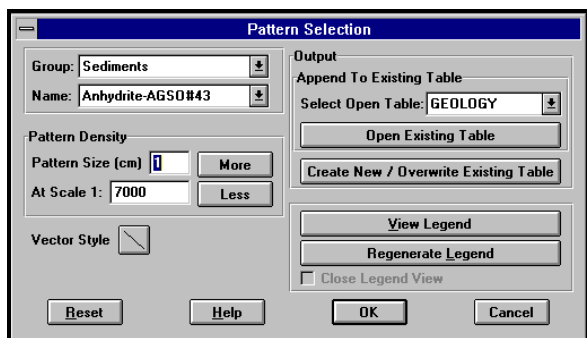
- Draw geographic reference graticules on your MapInfo plots.
- Enhance map displays with transparent vector based hatch patterns that don't obscure underlying raster images. Add stable text annotations to MapInfo lines.
- Display up to four numeric items as size and colour coded symbols at each location.



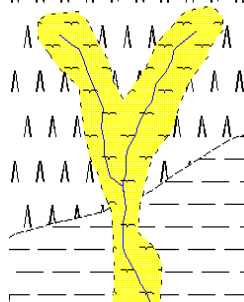
The **Graticule** module generates evenly spaced grids of easting and northing or latitude and longitude lines.



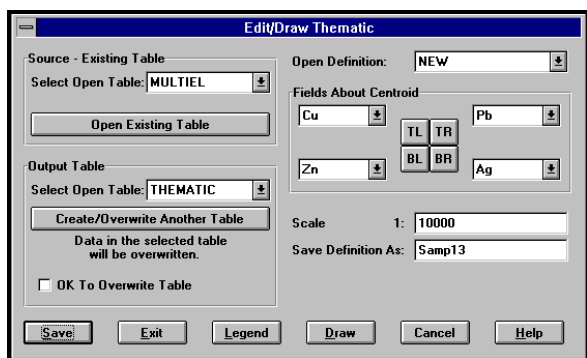
Graticules are created in any MapInfo map projection. You can show multiple map grids as well as latitude and longitude lines on the same map.



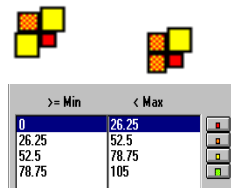
The **Vector Patterns** module fills MapInfo regions with vector line work corresponding to standard geological hatch patterns.



These 'transparent' vector patterns are ideal for posting onto raster images or other MapInfo region fill patterns. And you can control the density of hatching so patterns look good at plot scale and not just on the graphics screen.



The **Multiple thematics** module extends MapInfo thematics by presenting up to four independently scaled numeric items with symbols both size and colour coded according to the underlying data values.



Display definitions are automatically saved as reusable profiles and the thematic displays are themselves saved to their own permanent table.

AVAILABILITY GeoBasemap Display Tools is a companion product to the GeoBasemap Mapping System and is available for MS Windows machines running MapInfo V4.5 or later.



GPO Box 3202
BRISBANE Q 4002 AUSTRALIA
Ph +61 7 32100741 Fax +61 7 32100738

enquiries@geobasemap.com
www.geobasemap.com