

# Product Overview

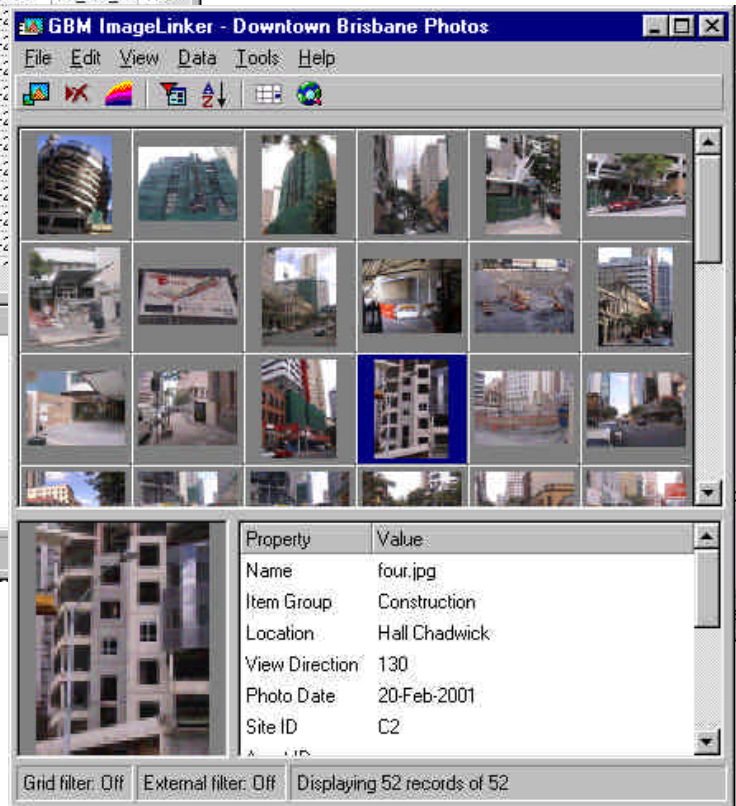
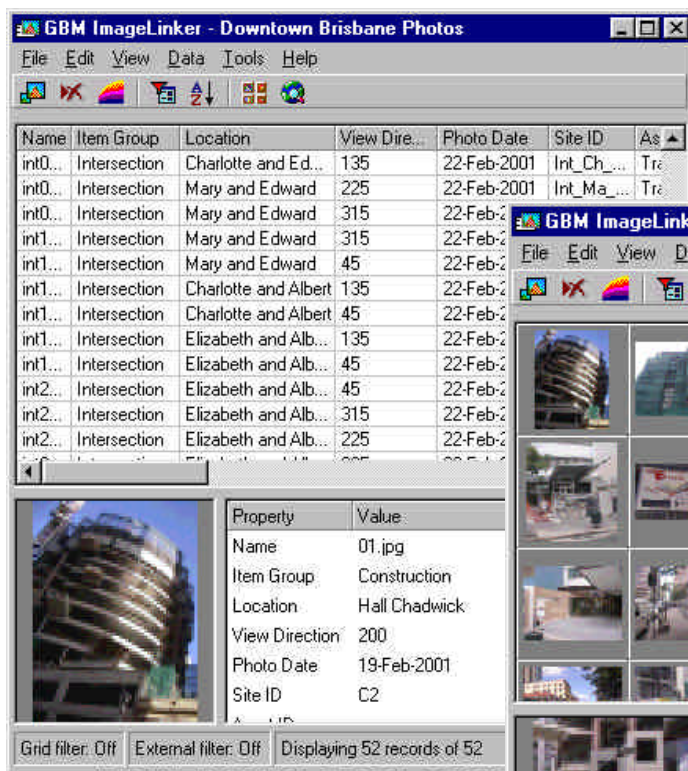


## GBM ImageLinker V1.6

from Exa-Min Technologies

### Key Phrases

- ◆ Describe and manage digital images and other PC files
- ◆ Two way hot-linking between the Image database and GIS systems
- ◆ Build image viewing into other PC applications.



**Now you can register and describe all types of files in GBM ImageLinker.**

Hot-link from a GIS map to list all the PDF files, Word documents and Spreadsheets associated with a map object. Double click a GBM ImageLinker database entry to launch the relevant file viewer application.

---

## ***What business need does GBM ImageLinker address***

It is now common practice to photograph assets and activities over time, but few organisations properly catalog and manage those photographs. Digital imagery is replacing conventional photographic prints, only compounding the image management problem as there is no convenient place to write down image details and no easy way to search through digital image collections.

GBM ImageLinker combines a database and image viewing tools within the one easy to use product. Filter and browse the database to find the right images, look at them on the screen, cut and paste images into reports or send them to the printer.

The image database holds a thumbnail view of each image along with user defined image tags and descriptions. Data tags stored along side each image are the key to intelligent two way GIS hot-linking. Click on the map to instantly list the images for a site or click the *GIS Find* button to mark the map location of a selected image.

GBM ImageLinker is also valuable for associating all types of external data files (including non image files such as spreadsheets, word documents, PDF and HTML documents) with map items. Click on a map to present a list of files that relate to that map location. Double click any entry in the list to open a that document.

## ***Who Needs GBM ImageLinker***

The Product is of value to any organisation with an image collection, but is of special relevance where it is the information about the image (such as photography date, location and purpose of photography) that gives it value, rather than simply the image graphics. Because GIS hot-linking is a unique feature of the product, it will be of special interest to spatially aware organisations who are interested in a photograph as much because of where and when it was taken as what it depicts.

Spatially aware organisations that value the image attributes are typically those that take photographs to document physical assets and monitor the condition of assets with time. Typical organisations include:

- ◆ **Local Government** - photographs of infrastructure installations (roads, signage, drainage works, parks and gardens)
- ◆ **Rural and environmental management agencies** - photographs of pasture conditions, weed infestations, pre and post rehabilitation shots of environmental damage, environmental monitoring.
- ◆ **Occupational health and safety** - Documenting hazard locations and warning signs
- ◆ **Geology and Mining** - Photographs of outcrops, drill core and mining faces.
- ◆ **Engineering consultants and contractors** - Photographs that monitor construction and maintenance of large infrastructure items - roads, railways, pipelines, transmission networks etc.
- ◆ **Defence, policing and intelligence** - Photographs of potential trouble spots or incident locations.

Hot-links to the image database can be built into almost any PC application. GBM ImageLinker is the perfect companion for a wide range of corporate computer applications such as asset management, property management and maintenance systems.

---

## **What is different about this product**

GBM ImageLinker does not address image enhancement or manipulation which are the primary focus of most imaging packages. The product is optimised to describe images, to quickly locate a required image and to present multiple images on the screen for comparison. Image search is assisted by sophisticated database filtering and list sorting options.

While some GIS systems have an in-built capability to associate an external file with a map item, they normally only support linking of one file with each map object and rely on hard wiring file paths within the GIS data files. In these systems you cannot associate several images with the one map location. These systems fail if a folder path is changed and hot-links are very difficult to maintain, especially if a project is moved to another computer.

With GBM ImageLinker you can associate any number of external files with a single map object and file paths are maintained centrally in the ImageLinker database, supporting automated folder management tools.

This is a fully featured product suitable for both small workgroups and major corporate installations. Advanced search and retrieval capabilities are complemented with image file management, report printing, database export and image cut and paste features.

A unique feature of GBM ImageLinker is the two way GIS hot-linking. Click on a map to present an image sub-set or match database and GIS attributes to mark the map location of selected images. The product is shipped with plug-ins for the MapInfo Professional GIS system. Hot-linking to in house applications or to other vendor products is easily arranged through the companion MapLinker and XLinker integration technologies from the GBM ImageLinker developer, Exa-Min Technologies Pty Ltd.

## **Technical Specifications**

### **Operating Environments**

GBM ImageLinker resides on a Windows PC system, accessing either a local PC database or operating in client server mode with a proprietary RDMS system (such as *Microsoft SQL Server* or *ORACLE*). PC systems specifications are similar to those required for Microsoft Office products.

### **Behind the Scenes**

The GBM ImageLinker database stores user defined tags and descriptions that document each image, along with a low resolution image thumbnail. The database browser can be set to list details in spread sheet mode or present a mosaic of thumbnail images or application file icons.

Double click any record to retrieve the full image from disk and send it to the in built image viewer for standard image format files. Non image format files are activated in the application registered in Windows Explorer for the file suffix.

### **Database Options**

The standard product is shipped with a royalty free Microsoft Jet engine database suitable for stand alone use or deployment in a small workgroup. With the standard Microsoft database edition, an operator may open the database in edit mode or many operators may browse the database or view

---

images simultaneously. An operator accessing the database in edit mode may load images or tailor database fields and descriptions to suite an individual project.

Workgroups who need more than one user to update the database simultaneously, will require the *Database Server Pack* allowing GBM ImageLinker to operate in client server mode over a Relational Database Management System such as Microsoft SQL Server.

Larger organisations, requiring more customised control over the access rights allocated to individual operators, or those deploying on an Oracle Database, will require the *Database Deployment Pack* in addition to the *Database Server Pack*. This pack includes documentation and database definition scripts for *ORACLE* and *Microsoft SQL Server*, allowing database administrators to more intimately configure and tune the database.

## ***Developer Credentials***

GBM ImageLinker is a member of the GBM Software product range developed by Exa-Min Technologies Pty Ltd. GBM ImageLinker complements other Exa-Min products distributed under the GeoBasemap and MapLinker trade marks.

Exa-Min is a mapping systems consultant and developer of shrink wrap software products. The company commenced operations in 1991 and specialises in the integration of corporate computer systems with electronic maps. The current customer base spans the Mining, Defence, Land Administration, Environmental Management and Telecommunications sectors.

Exa-Min systems support deployment of mapping throughout the enterprise. Of special relevance is the MapLinker technology that integrates corporate knowledge bases through context sensitive hot-linking between applications. MapLinker connects commercial off-the-shelf systems and in-house developed software into a unified processing web. Plug-ins are available for a range of mapping products as well as asset, document management and office automation systems.

Exa-Min has a strong grounding in Geographic Information Systems technology as a MapInfo strategic partner and long term developer of MapInfo add-on products. The programming and implementation team is experienced in MapInfo and ESRI products. The company delivers stand alone PC products as well as web solutions and corporate deployment based on high end database products such as ORACLE 8i spatial. .

GBM ImageLinker focuses the MapLinker integration technology and Exa-Min's client-server database expertise to deliver a product ideally suited to management of digital imagery.



GBM Software, GBM ImageLinker, MapLinker and GeoBasemap are Exa-Min trade marks.



Second Floor, 143 Charlotte St, BRISBANE  
GPO Box 3202, Brisbane Q 4001  
**AUSTRALIA**

[www.geobasemap.com](http://www.geobasemap.com)

[images@geobasemap.com](mailto:images@geobasemap.com)

*Exa-Min Technologies, April 2002*