

The GBM Mobility Suite combines robust mobile mapping and data collection software with management tools to provide a complete field data collection solution. Mobile and desktop systems are complemented with server products to provide scalability to the enterprise and to fully integrate field operations with other business processes.

Field Applications - Solutions for the mobile workforce

GBM Mobile

GBM Mobile is an out-of-the-box mobile mapping and data collection solution operating on Windows Mobile (PDA) hardware. It combines mobile GIS mapping, with user customisable data entry forms. It supports GPS units and Cameras.



GBM Mobile is bundled with **GBM Mobile Manager** and **GBM Mobile Merge** (see below) to provide a complete field data management solution.

The product is ideal for mobile operators who need to navigate to field locations and to view or collect information about assets at those locations. GBM Mobile is offered in three separately priced editions.

The standard edition supports GPS units that use the industry standard NMEA data format. This covers the vast majority of GPS units.



GBM Mobile for Trimble works intimately with Trimble GPS hardware to integrate real time differential and post processed GPS correction services. This edition also supports the Contour XLS ic laser distance measurement device to allow features to be mapped from a distance by targeting

them with the laser beam.

GBM Mobile for ike is fully integrated with the GPS, Camera, Compass, inclinometer and laser range finder built into ike devices.

GBM Portable

GBM Portable delivers mapping and data entry capabilities on PC systems that parallel the environment that GBM Mobile delivers to PDA users. GBM Portable supports full GIS mapping, GPS integration and the same custom forms capability as GBM Mobile. It operates on desktop, notebook and tablet PCs as well as the new Windows Ultra Mobile (UMPC) devices.



Easy-to-use interfaces assist project supervisors to tailor maps and information display. End user training overheads are very low.

GBM Portable is the ideal system for mobile operators who prefer a Windows computer to a PDA. It also provides an office solution that parallels the GBM Mobile field environment.

Standard Support Systems – Integrating mobile and office systems

GBM Mobile Manager for Windows

GBM Mobile Manager is bundled with all GBM Mobile and GBM Portable licenses.



This module allows Project Administrators to build custom data entry forms and manage field programs.

GBM Mobile Manager also provides field operators with a very easy-to-use interface for transferring data between their mobile data collection device and an office PC. Users

wishing to centralise data management on to a corporate server should

consider deploying the optional **GBM Enterprise Manager** products discussed below.

GBM Mobile Merge

This module automates the merging of data edits from multiple mobile computers into the primary MapInfo datasets.

GBM Mobile Merge works with GBM Mobile and GBM Portable to maintain a complete audit trail of data downloads and subsequent processing.

GBM Mobile Merge operates within MapInfo Professional. It is included with all GBM Mobile and GBM Portable licenses.

Enterprise Level Support Systems – Optional GBM Mobile extensions

GBM Enterprise Manger

GBM Enterprise Manager provides similar functionality to GBM Mobile Manager but is optimised for installations with large numbers of mobile operators.

With this product field staff transfer data between their mobile devices and a central server rather than a Windows PC. There is no need to install software on a support PC. Wireless data transfer, including wireless LAN and mobile phone connections is also supported. GBM Enterprise Manager is especially useful for field personnel who do not

have ready access to a networked PC and for managed networks where it is difficult to install client software on end-user computers.

GBM Autoloader

GBM Autoloader works with GBM Enterprise Manger to fully automate direct database loading of field observations that have been recorded through GBM Mobile.

Plug-in processing modules are easily tailored to suite customer's specific business processes or database environments.

Integrated Mapping Solutions – Spatially enabling business processes

GBM Office

GBM Office solutions combine the mapping features of GBM Portable with advanced database connectivity and custom reporting.

GBM Mobile custom forms are supported as well as spreadsheet style data views. Spatial features are accessed from either GIS files or spatial database such as SQL Server and Oracle.

GBM Office is the ideal environment for delivering map enabled custom database solutions that integrate mapping into customer specific business processes.

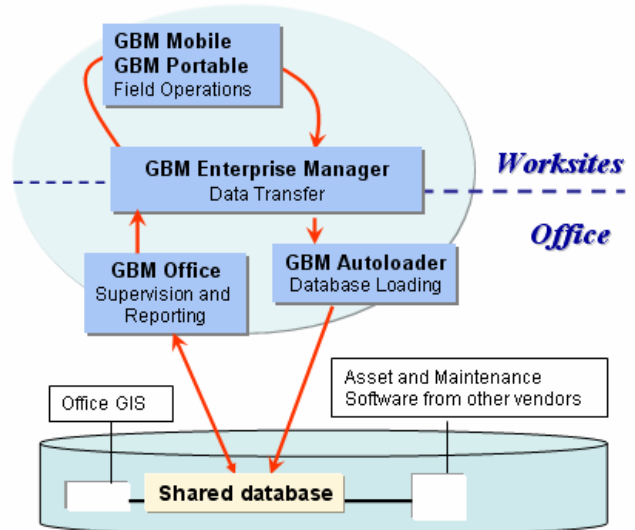
As solutions are tailored from the core system through XML configuration files it takes very little time to deliver a robust integrate mapping solution.

Packaged Solutions

Exa-Min has pre-built GBM Office solutions for specific industry sectors. These are commonly based on our Works Manager database structure that records information about the multiple inspections and work orders that may be registered against individual assets.

These packaged GBM Office implementations are ideal for the day to day management of field crews. They combine with other GBM Mobility suite products and integrate with external databases to manage the full data cycle through planning to execution and data consolidation.

Packaged solutions are available for a number of common operations including routine *Asset Inspections* and *Tree Management*.

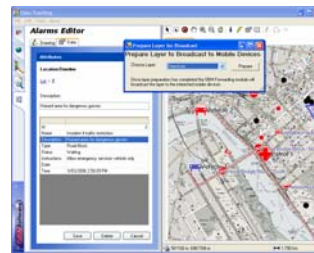


Real-time Information Systems – When time and location matter

GBM Integrated Command Centre

This is a GBM Office based solution that includes real time GPS tracking and incident replay. This is a multi-user enterprise level solution that includes:

- Mobile operator tracking with real-time map displays
- Re-transmission of selected operator locations to authorised mobile stations in real-time
- Integration with sensor arrays and alarm systems
- Automated transmission of field observations (including photographs) to the command centre



- Broadcast of map updates and operating instructions from the command centre to mobile operators
- Automated triggering of alerts and alarms

The GBM Integrated Command Centre is an enterprise level, real time information system. It

is an ideal solution for organisations that need immediate visibility of evolving situations.

Custom Solutions – When you have special requirements

GBM Mobility Solutions are developed by Exa-Min Technologies Pty Ltd. Customer specific solutions are tailored from the robust pre-developed components that underpin the above multi-user solutions.

These include solutions that integrate directly with spatial databases or third party information systems as well as custom mobile modules that manage complex database relationships.

As well as building solutions to customer specifications, Exa-Min has pre-developed a number of niche market solutions using GBM Office and GBM Enterprise Manager.

Contact Exa-Min or your local GBM Software specialists for details of specific projects and pre-develop niche market solutions.



The GBM Mobility Suite is developed by:

Exa-Min Technologies
www.geobasemap.com

GPO Box 3202, Brisbane
 QLD 4001, Australia
 Ph: +61 7 32100741
 Fax: +61 7 32100738
enquiries@geobasemap.com