



## Mapping System V2.2 for MapInfo Professional

**Mapping System is more than a set of graphical tools. It is an intergrated system that helps you maintain and enhance your valuable data, produce quality scaled maps and analyse data relationships.**

### Standardise Map Presentation

*Mapping System* maintains a database code for each map object and an associated display style. Like items (such as all towns, roads, railways and special technical features) look the same on every map. And you can control which layers the various classes of graphical object are drawn on.

It becomes easier to conform to Corporate or Industry mapping standards and a single change to the central style definition file leads to a simple update of the associated maps.

### Manage your valuable data

Mapping System embeds description, abstract and data source information into MapInfo tables. This metadata together with full file pathnames is available through the Mapping System layer control function. It becomes much easier to keep track of your data files and keep notes of your edits. And you can document your displays with the Mapping System "list metadata" function.

### Support GIS Analysis

GIS systems provide special spatial analysis tools. For example it is possible to query MapInfo for locations where igneous rocks of a given age range intrude favourable sediments or where a soil type occurs in a particular rainfall belt. Advanced analysis functions require 'GIS ready' data, that means no gaps or overlaps between abutting map regions and appropriate tagging of map objects.

Mapping System solves the common line problem (see below). Mapping System *Drawing and Style* tools automatically add your database codes.

### Common Boundary Lines

With Mapping System you draw the line segments and incorporate nodes from those segments into region definitions.

Important Mapping System modules are the *Line Intersection* tool, the *Drawing and Style* tools and the *GIS Boundary* tool that automatically assigns the style code and manages the output tables.

### Maintain Data Integrity

Graphical editing of sample locations can result in a mismatch between map locations and underlying database

coordinates. The Mapping System *Table Update* tool keeps your database up to date.

### Special Symbols

We have added a comprehensive geological symbol set (Over 100 items including bedding, jointing, foliation etc) as well as north arrows and other common map features. These can be rotated to a specified strike or dip direction and include appropriate annotation (such as dip angle or mining shaft name). And we can add any extra symbols you may need.

### Scaled Text

With Mapping System you specify the size each class of text will appear on the final scaled map. That means more consistent maps as text size is no longer a function of your current graphics screen view.

### Graticules and Plot Ancillaries

The Mapping System *Graticule* module draws an annotated geographic reference grid in any MapInfo coordinate system. The Mapping System *Special Symbols* module lets you orientate north arrows for the various references (eg true and magnetic north). And we have added an enhanced scale bar generation tool.

### Produce Quality Maps to Scale

*Mapping System* standardises map displays and automates production of map legends. The Mapping System style codes associated with visible objects identify the item to be included in the map legend. The *Plotting* module greatly simplifies creation of quality scaled output.

### Work More Effectively

- *Mapping System's Layer Information* tool lets you reference map layers by a meaningful description.

*Mapping System* dynamically adds and removes toolbar button pads to make the most of your valuable screen real estate.

Special *Mapping System* functions such as graphical styles management, automatic legend generation, simplified graticule creation, line intersection and streamlined plotting boost your operator's productivity.

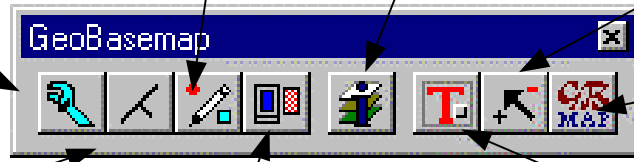
# Connecting Information to Maps **GeoBASEMAP™ Mapping System V2.2**

**Mapping Tools** - Line Intersection, Create GIS regions, Geographic Graticules, Maintain consistency between map location and database listing.

**Drawing and Style Tools** Standardise map displays add database codes to map objects

**Layer Information** Full pathname and metadata, more efficient interface

**View and Select tools** Commonly used MapInfo tool buttons



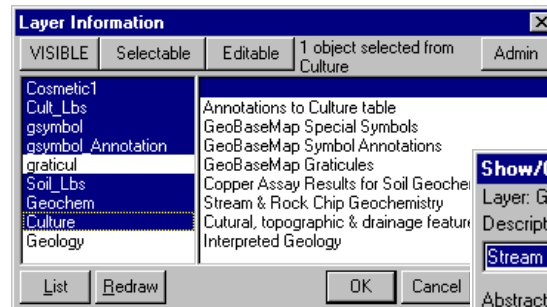
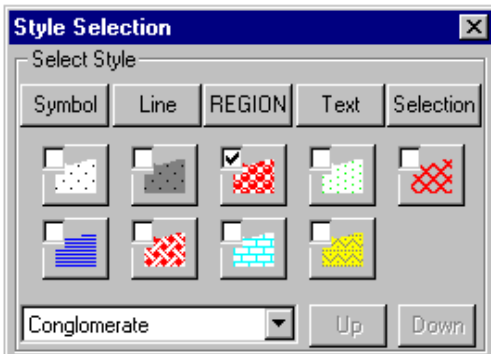
**GeoBasemap Information**

**Special Symbols** - manage symbol rotation and annotation. Prompt for data values.

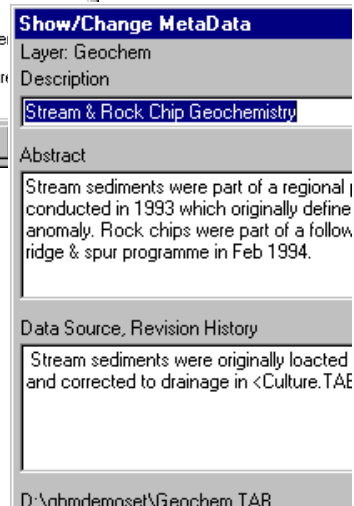
**Plotting Tools** - Scaled output, scalebars and map legends

**Toolbar Control** Manage your button pads

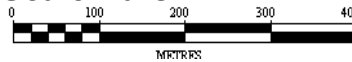
## Drawing and Style Tools



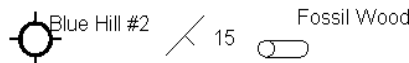
## Layer Information and Metadata Management



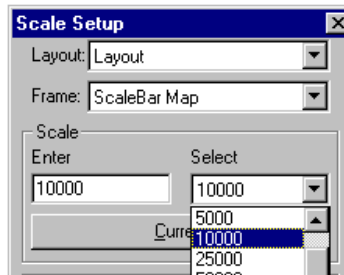
## Scale Bars



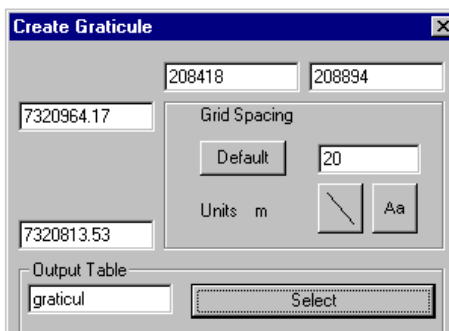
## Annotated Symbols



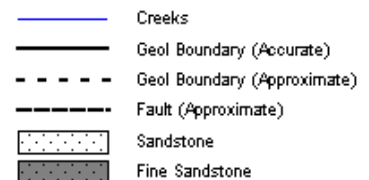
## Plot to Scale



## Geographic Graticules



## Map Legends



## AVAILABILITY

**GeoBasemap Mapping Systems V2.2** is available for immediate installation with MapInfo Professional.  
**Your Local GeoBasemap Reseller:**



www.geobasemap.com / enquiries@geobasemap.com Ph. 07 3210 0741 Fax. 07 3210 0738