

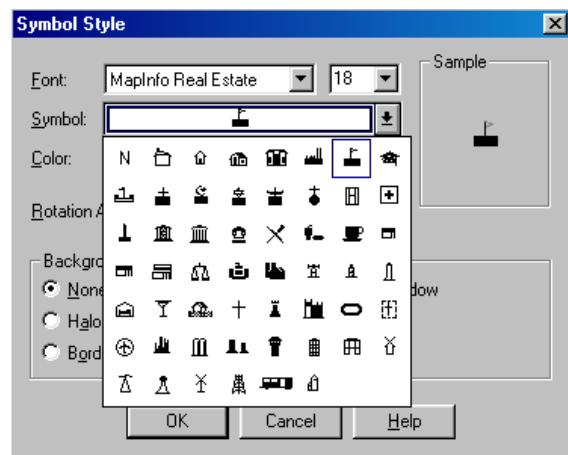
## Warning – Missing symbols and text characters

Certain map symbols are not drawn by MapInfo MapX Mobile. The “&” character is omitted from all text strings. Maps prepared with MapInfo Professional that use these symbols on include the “&” character in text strings, will not be presented properly on the mobile device.

This problem affects one symbol in each MapInfo symbol set and is likely to similarly affect one symbol in each font file acquired from other sources. This bug has been reported to MapInfo Corporation with a request for urgent attention, but until it is fixed, we recommend users avoid the problem symbols. Fortunately, only very few symbols are affected.

The affected symbols are listed below. They occupy the second last position in the top row of the symbol picker in MapInfo Professional.

- ▼ MapSymbols
- MapInfo V3 Compatible (No problems detected)
- ↑ MapInfo Arrows
- MapInfo Cartographic
- ✂ MapInfo Miscellaneous
- ⊕ MapInfo Oil and Gas
- ▬ MapInfo Real Estate
- ▼ MapInfo Symbols
- MapInfo Shields
- ★ MapInfo Transportation
- ☁ MapInfo Weather
- & Other font sets



*These symbols occupy the “&” position in the windows fonts that describe each symbol sets.*

Further problems have been detected with the symbol picker in MapInfo MapX mobile. Only a sub-set of symbols in each font set are offered for selection, null characters are included in some symbol sets and more serious problems are encountered on Pocket PC 2003 installations.

In GBM Mobile V2.10, Exa-Min has replaced the standard MapInfo symbol picker with a custom tool produced by our own developers. In the standard release this tool offers a much smaller range of symbol options, but users can add additional symbols as needed by editing the .xml set up file installed on the PDA. The standard MapInfo symbol picker (displaying the full range of symbols) can still be accessed through the custom form builder in GBM Mobile Manager, but avoid using any of the symbols listed above as they will not be drawn on the map, even though GBM Mobile will correctly insert them into the MapInfo .tab file.

We are working with MapInfo Corporation to expedite the correction of this problem.