

GBM Mobile

Loading Custom Forms with V3.50.0037p

Some GBM Mobile install CDs contain a read-only copy of the custom forms definition file. If this read-only file is installed on the mobile device, it cannot be easily updated.

This presents as a problem loading new forms onto the mobile device through either the Mobile Manager *Load Data* or *Load Forms* menus. This issue does not manifest with all GBM Mobile V3.50.0037p installation CDs.

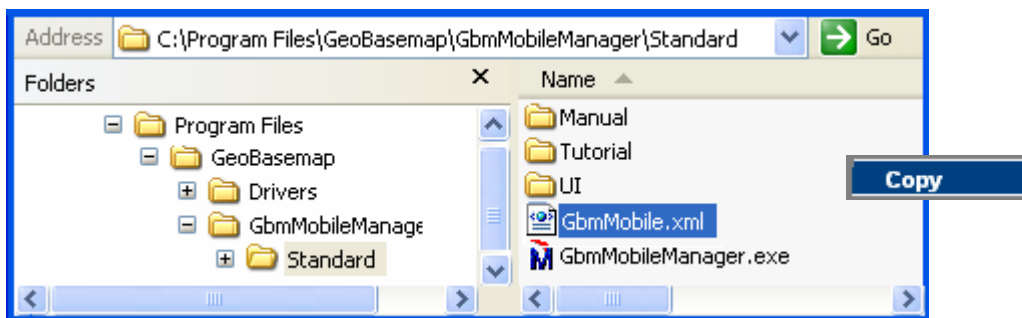
This problem is easily resolved by replacing the custom forms file on the mobile device with the equivalent file from the GBM Mobile Program Files folder on the support PC.

1. Connect the PDA

- Connect the PDA to a Windows PC via Microsoft Active Sync

2. To copy the file

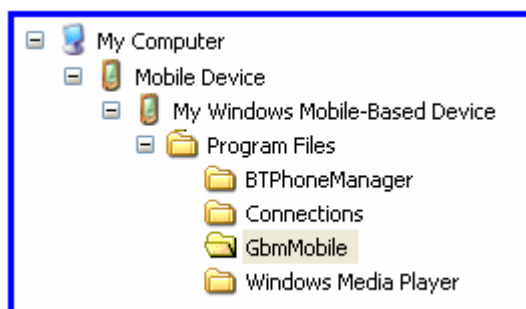
- With Windows Explorer on a support PC that has GBM Mobile Manger loaded, browse for the GBM Mobile program folder.



- Click on the file GbmMobile.xml to select it and then click copy from the right mouse menu.

3. To reload the file

- Browse for the GBM Mobile program folder on the mobile device (Mobile device\My Windows Mobile-based Device\Program files\GBM Mobile).



- Click Paste.
- Click OK to the prompt concerning overwriting and converting the file

Once these file attributes are corrected, the load forms and load data functions will operate normally. It will only be necessary to repeat these procedures each time GBM Mobile is loaded onto a mobile device from an installation of Mobile Manager loaded from a defective GBM Mobile V3.50.0037p installation disk.

This issue has been corrected in the upcoming GBM Mobile V4.10 release which will be available by the end of July 2006. A corrected V3.50 build (Release 3.50.0037q) will be sent to customers on request.